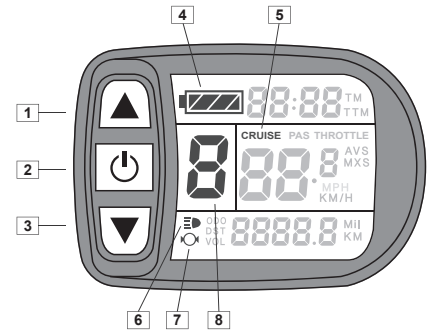


■ Constant Screen and Display Indicator

The display has constant indicators and variable indicators based on the screen you are viewing. The standard commands and indicators are here on the right.



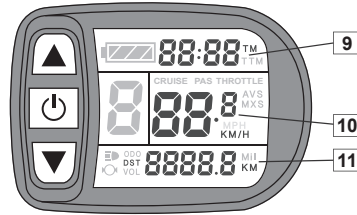
■ Variable Screens and Display Indicators

The display has 3 screens with different information.

The screens can be displayed after power on, pressing the ON / OFF button quickly. The screens will be called for now on DISPLAY-1 / DISPLAY-2 / DISPLAY-3.

■ DISPLAY-1 Information (default screen)

9	TM	Partial Timing Indicator
10	Km/H	Speed indicator
11	DST	Partial distance travel indicator



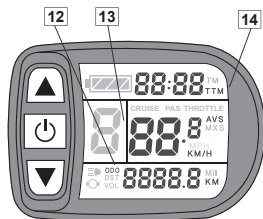
n°	Pulsante/Indicatore	Descrizione
1	▲	Up arrow button
2	⏻	ON / OFF button
3	▼	Down arrow button
4	🔋	Battery level indicator
5	☰	Backlight Indicator
6	CRUISE	Cruise Control Activation Light
7	⚡	Alert lamp for battery recharging during braking
8	ASSIST	Speed level indicator

Km and partial travel time reset

During the DISPLAY-1 display, simultaneously press the two buttons ▲ ▼ to the flashing of the two DST and TM voices. When flashing, confirm deletion of partial data by pressing the ON / OFF button ⏻.

■ DISPLAY-2 Information

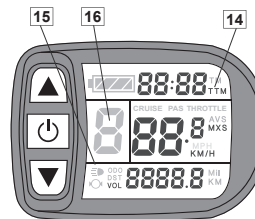
(Click quickly on ON / OFF button on the Display-1)



12	ODO	Total distance travel indicator
13	AVS	Average speed indicator
14	TTM	Total running time indicator

■ DISPLAY-3 Information

(Click quickly on ON / OFF button on the Display-2)



14	TTM	Total running time indicator
15	VOL	Battery Voltage
16	MXS	Highest Absolute speed

■ Triride's main commands and information



a. Switching the display on and off.

Press the ⏻ (ON / OFF) button for 3 seconds to turn on the display. When the display is on, press the ⏻ (ON / OFF) button for 3 seconds to turn off the display.



b. Display's backlight.

Press the ▲ (up arrow) button for 5 seconds until the backlight of the display is on. Press the ▲ (up arrow) button for 5 seconds, or till the backlight of the display is off.



c. Battery level indicator.

The battery level indicator 🔋 allows you to control the remaining charge. Battery level can be also checked on indicator located on the battery.



d. Speed change indicator (ASSIST).

Using the buttons ▲ ▼ you can select the driving speed from 1 to 5 which are indicated in the ASSIST frame of the display. Pressing the UP ▲ button the speeds increased (1,2,3 ...), pressing the DOWN ▼ button the speeds decreased (5,4,3 ...). By setting 0, the Triride will be in neutral position and the accelerator will be deactivated.



e. CRUISE CONTROL.

All Triride models have Cruise Control that allows you to "Lock" the travel speed. The control can be activated pressing the button ● on the control panel during the run. Activation will be confirmed by the CRUISE indicator on the display. The control switches off automatically by accelerating or activating the brake.



f. Recharging the battery while braking.

All Triride models have the automatic recharging function during braking in order to be able to retrieve energy and extend operating time. The flashing of ⚡ (brake) and 🔋 (battery) indicators confirms that the function is activated.